

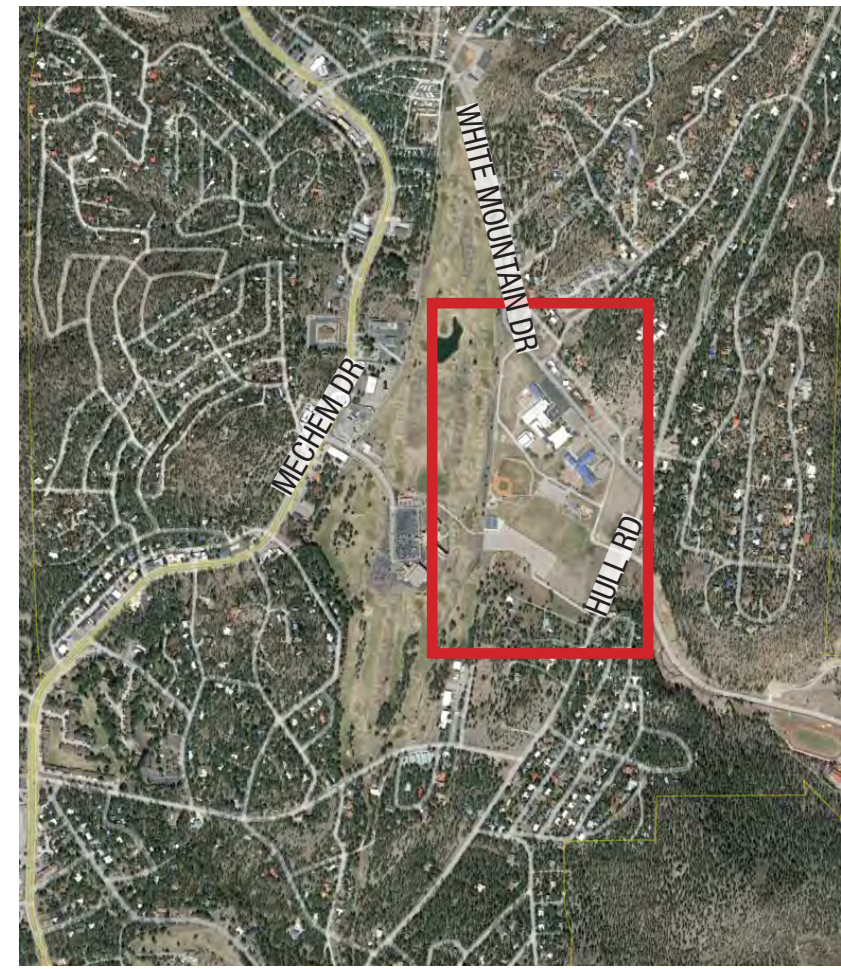
- ① LARGE BREED DOG PARK (APPROX. 1 ACRE) WITH SHADE STRUCTURES AND WATER
- ② SMALL BREED DOG PARK (APPROX. 1 ACRE) WITH SHADE STRUCTURES AND WATER
- ③ HIGH SCHOOL VARSITY FAST-PITCH SOFTBALL FIELD (70' BASELINE, 240' FOUL POLE, 260' OUTFIELD)
- ④ PARKING (673 SPACES TOTAL) WITH INTEGRAL GREEN STORMWATER INFRASTRUCTURE
- ⑤ FLEX FIELD (BASEBALL, SOFTBALL, TEE BALL) (75' BASELINE, 240' FOUL POLE, 250' OUTFIELD)
- ⑥ SOCCER FIELD STRIPING (225' X 360')
- ⑦ SAND VOLLEYBALL
- ⑧ PICKLEBALL COURT
- ⑨ SHADE STRUCTURE
- ⑩ PRESS BOX
- ⑪ RESTROOM/ VENDING/ TEAM ROOM
- ⑫ RESTROOM
- ⑬ BASKETBALL COURT
- ⑭ PLAY AREA WITH REDEDICATED 9-11 MEMORIAL AND SHADE
- ⑮ MAINTAIN ACCESS ACROSS GOLF COURSE
- ⑯ EXISTING TENNIS AND PICKLEBALL COURTS TO REMAIN
- ⑰ EXISTING TRAIL TO REMAIN
- ⑱ MAINTAIN, REPAIR, IMPROVE, AND EXPAND WETLANDS
- ⑲ EXISTING BASEBALL FIELD TO REMAIN
- ⑳ HIGH SCHOOL JUNIOR VARSITY FAST-PITCH SOFTBALL FIELD (60' BASELINE, 200' FOUL POLE, 225' OUTFIELD)
- ㉑ POSSIBLE FUTURE 40,000-60,000 SF COMMUNITY CENTER
- ㉒ BATTING CAGES
- ㉓ RECONSTRUCTED TRAIL
- ㉔ FOOTBALL STRIPING (160' X360') (FALL ONLY)

HATCH LEGEND

	ASPHALT PAVEMENT
	TURF GRASS
	CONCRETE PAVEMENT
	BUILDING/STRUCTURE
	DOG PARK
	PLAY AREA
	WETLAND
	PERMANENT FENCE
	TEMPORARY FENCE



A1 WHITE MOUNTAIN REC AREA – OPTION A SPRING (SOCCER AND SOFTBALL)
SCALE: 1" = 100'-0"



- ① LARGE BREED DOG PARK (APPROX. 1 ACRE) WITH SHADE AND WATER
- ② SMALL BREED DOG PARK (APPROX. 1 ACRE) WITH SHADE AND WATER
- ③ HIGH SCHOOL VARSITY FAST-PITCH SOFTBALL FIELD (SPRING ONLY)
- ④ PARKING (673 SPACES TOTAL) WITH INTEGRAL GREEN STORMWATER INFRASTRUCTURE
- ⑤ FLEX FIELD (BASEBALL, SOFTBALL, TEE BALL) (SPRING ONLY)
- ⑥ SOCCER FIELD STRIPING (225' X 360')
- ⑦ SAND VOLLEYBALL
- ⑧ PICKLEBALL COURT
- ⑨ SHADE STRUCTURE
- ⑩ PRESS BOX
- ⑪ RESTROOM/ VENDING/ TEAM ROOM
- ⑫ RESTROOM
- ⑬ BASKETBALL COURT
- ⑭ PLAY AREA WITH REDEDICATED 9-11 MEMORIAL AND SHADE
- ⑮ MAINTAIN ACCESS ACROSS GOLF COURSE
- ⑯ EXISTING TENNIS AND PICKLEBALL COURTS TO REMAIN
- ⑰ EXISTING TRAIL TO REMAIN
- ⑱ MAINTAIN, REPAIR, IMPROVE, AND EXPAND WETLANDS
- ⑲ EXISTING BASEBALL FIELD TO REMAIN
- ⑳ HIGH SCHOOL JUNIOR VARSITY FAST-PITCH SOFTBALL FIELD (SPRING ONLY)
- ㉑ POSSIBLE FUTURE 40,000-60,000 SF COMMUNITY CENTER
- ㉒ BATTING CAGES
- ㉓ RECONSTRUCTED TRAIL
- ㉔ FOOTBALL STRIPING (160' X360')

HATCH LEGEND

	ASPHALT PAVEMENT
	TURF GRASS
	CONCRETE PAVEMENT
	BUILDING/STRUCTURE
	DOG PARK
	PLAY AREA
	WETLAND
	PERMANENT FENCE



A1 WHITE MOUNTAIN REC AREA – OPTION A FALL (SOCCER AND FOOTBALL)
SCALE: 1" = 100'-0"